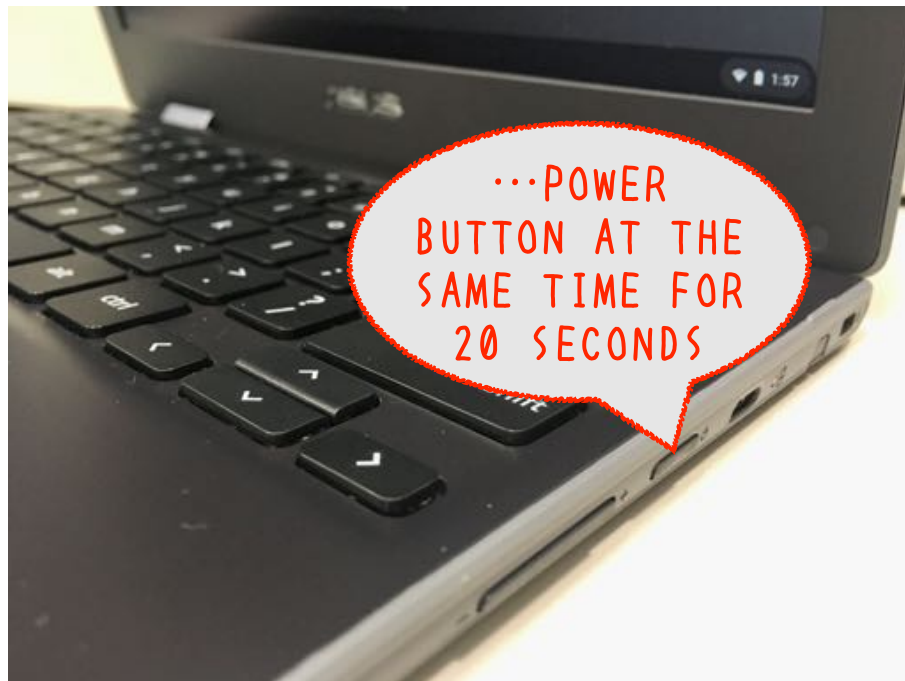
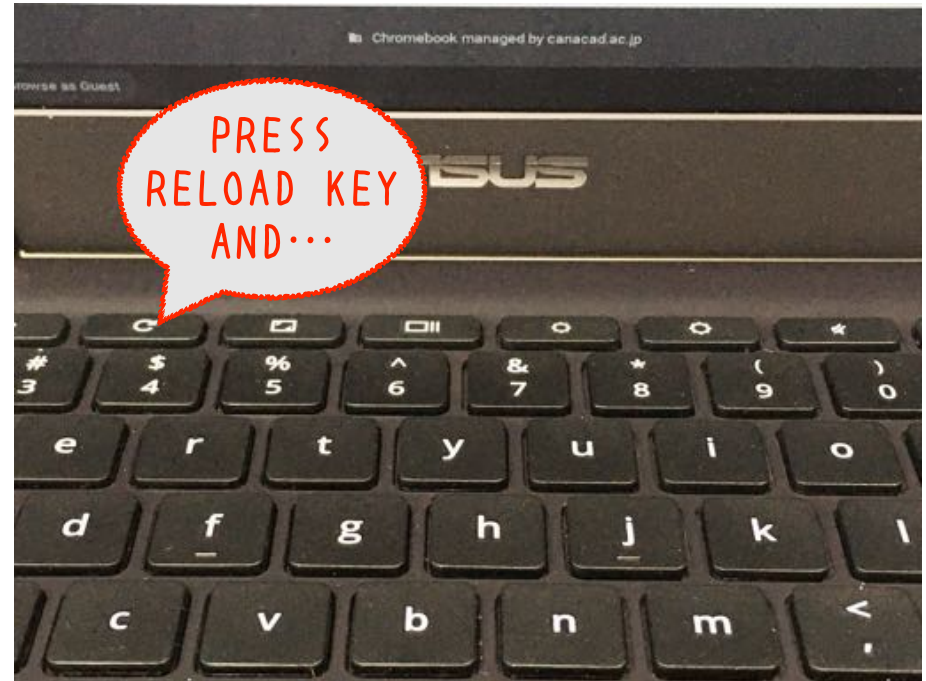
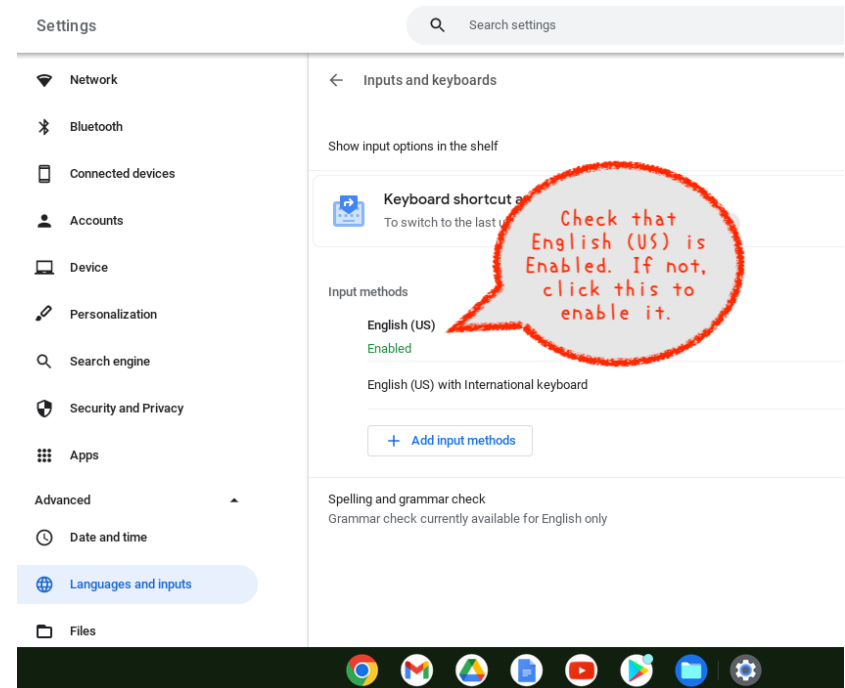
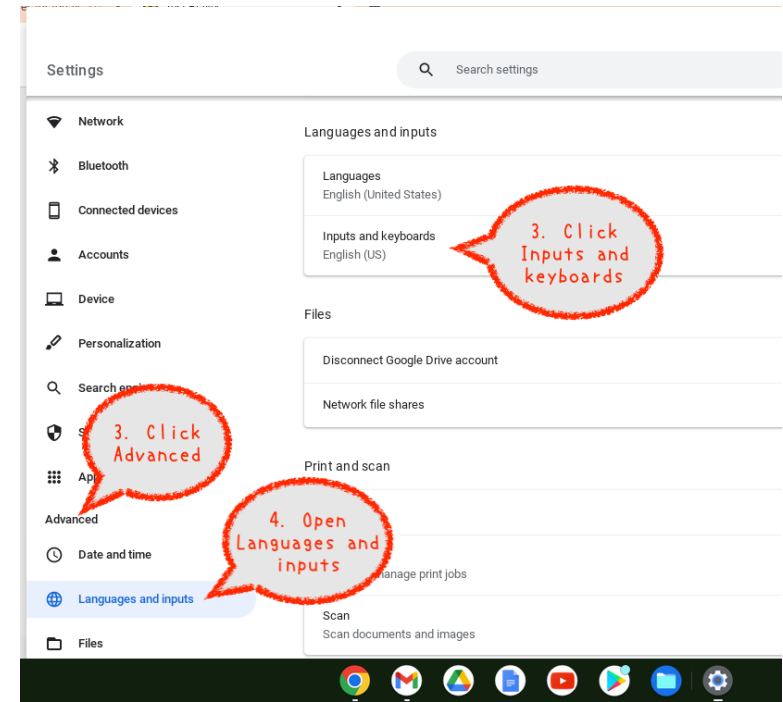
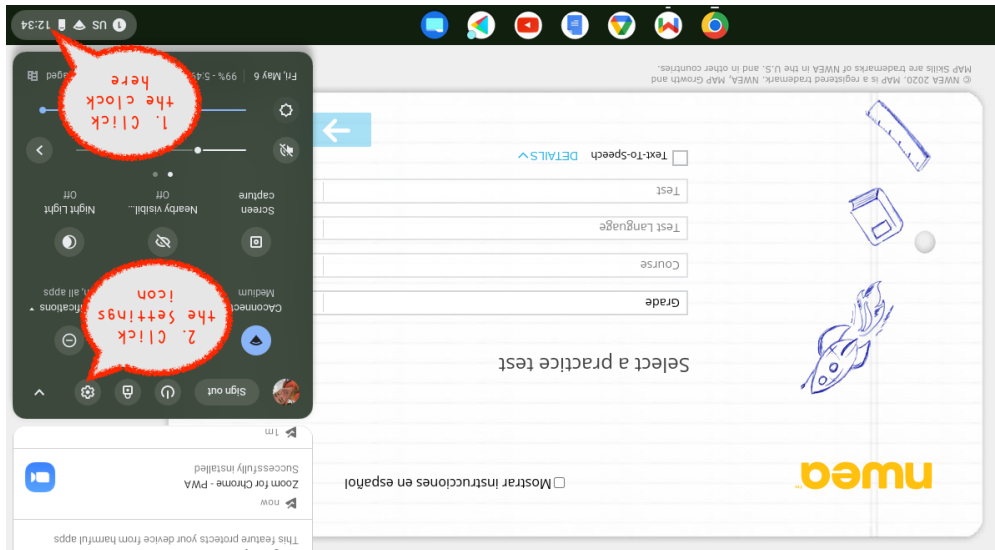


HOW TO FIX IT WHEN YOUR CHROMEBOOK IS NOT TURNING ON

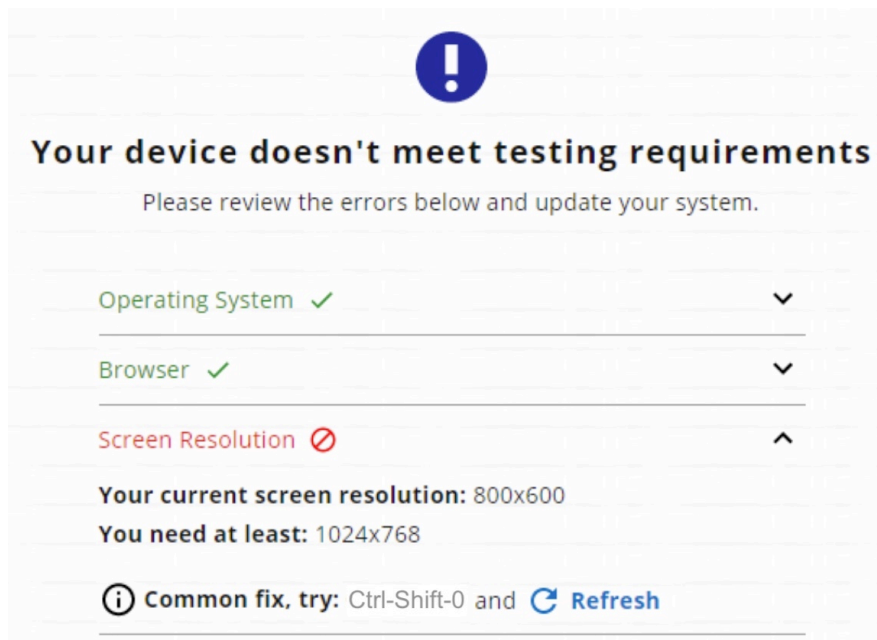


After this
Release all keys
Press power button again
Wait for your Chromebook
To turn on

WHEN YOU CANNOT TYPE APOSTROPHES ON YOUR CHROMEBOOK



“YOUR DEVICE DOESN’ T MEET TESTING REQUIREMENTS” AND HOW TO FIX IT



Pressing the suggested shortcut (Ctrl-Shift-ZERO) usually fixes the screen resolution, but the Reload key often fails to work.

If you can't reload the test page, press the power button on the right side of your Chromebook to force shut down, then press it again to restart your device.