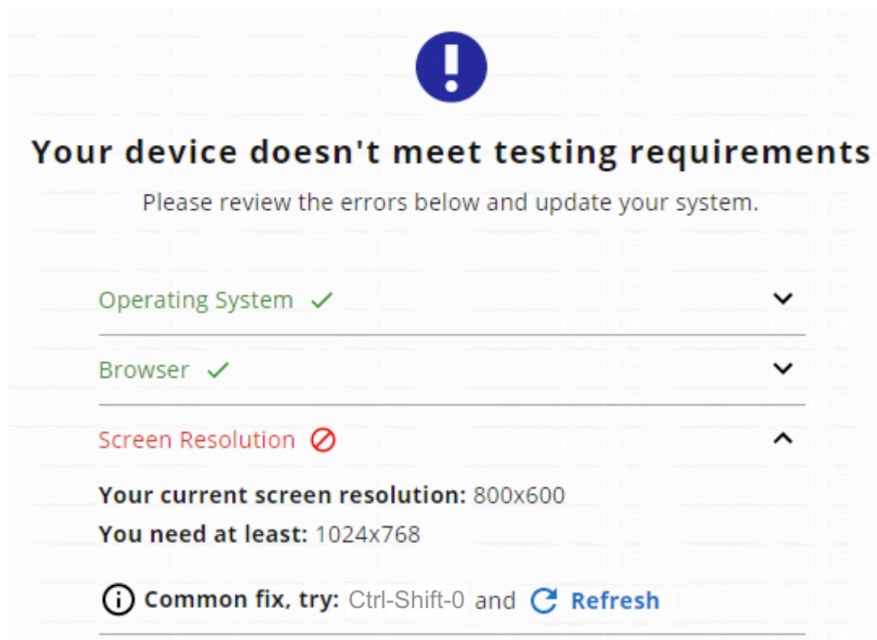


“YOUR DEVICE DOESN’ T MEET TESTING REQUIREMENTS” AND HOW TO FIX IT



Pressing the suggested shortcut (Ctrl-Shift-ZERO) usually fixes the screen resolution, but the Reload key often fails to work.

If you can't reload the test page, press the power button on the right side of your Chromebook to force shut down, then press it again to restart your device.