

Install PaperCut for Mac

2023-09-26

Sonny Ashimori

Download the installer and read this instruction carefully before you install it!

Install PaperCut for Mac

https://tech.canacad.ac.jp/software/printing/Install_PaperCut.dmg

Open the downloaded disk image. A disk icon will appear on your desktop.



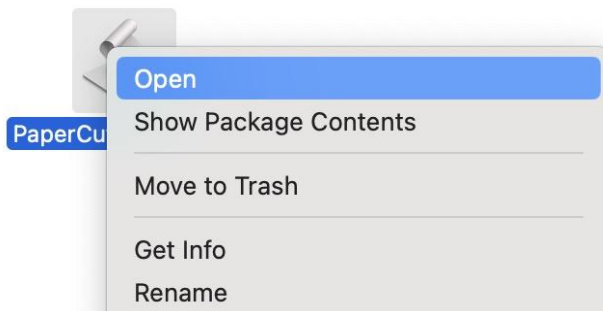
Install_PaperCut.
dmg

This is the PaperCut installer script. **DO NOT double-click** to open it.

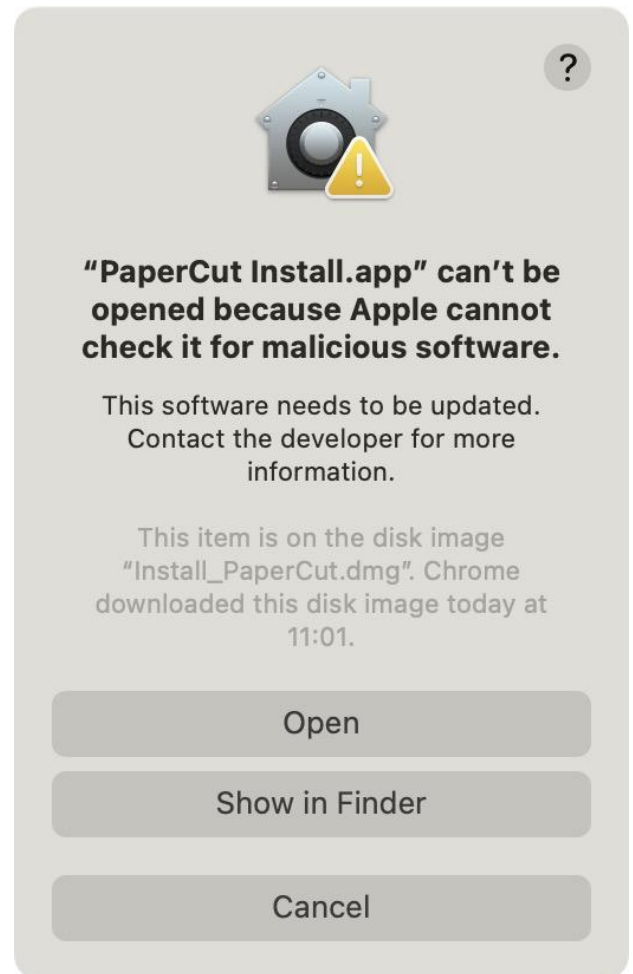
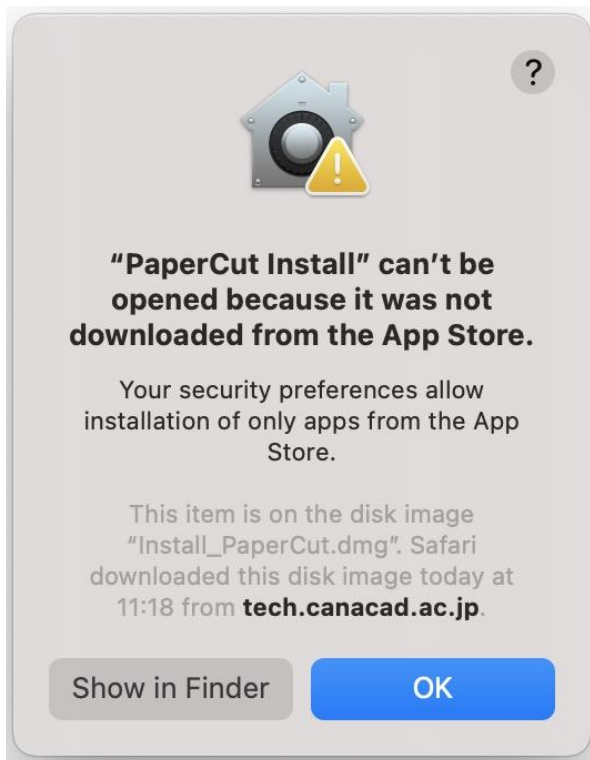


PaperCut
Install.app

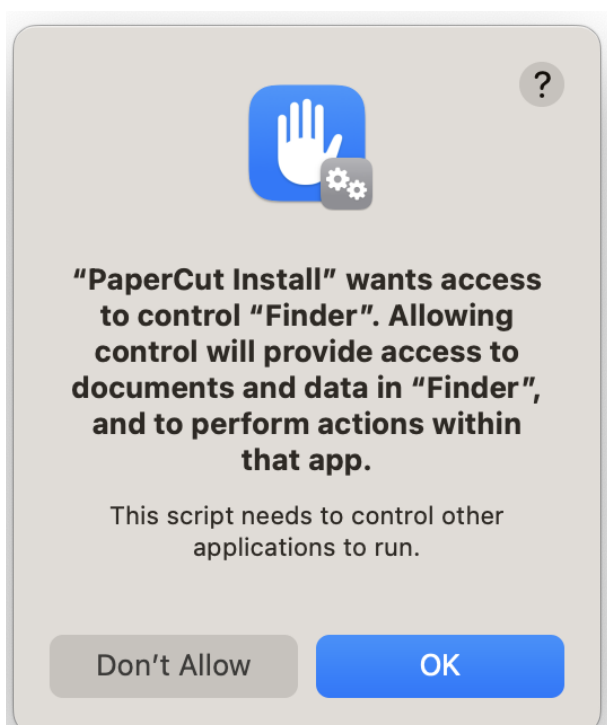
To open the installer script, **control-click** (hold down the control key and click the icon) and select **“Open”** from the contextual menu.



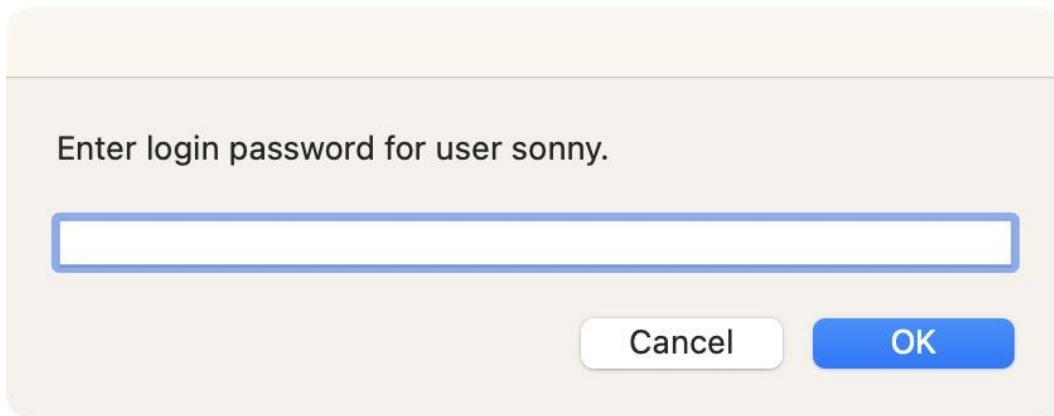
It won't open the first time. Click OK, then control-click and open again, to see the Open button. Click the button and continue.



After the script is opened, you will see this security dialog from macOS. Click "OK" to continue.

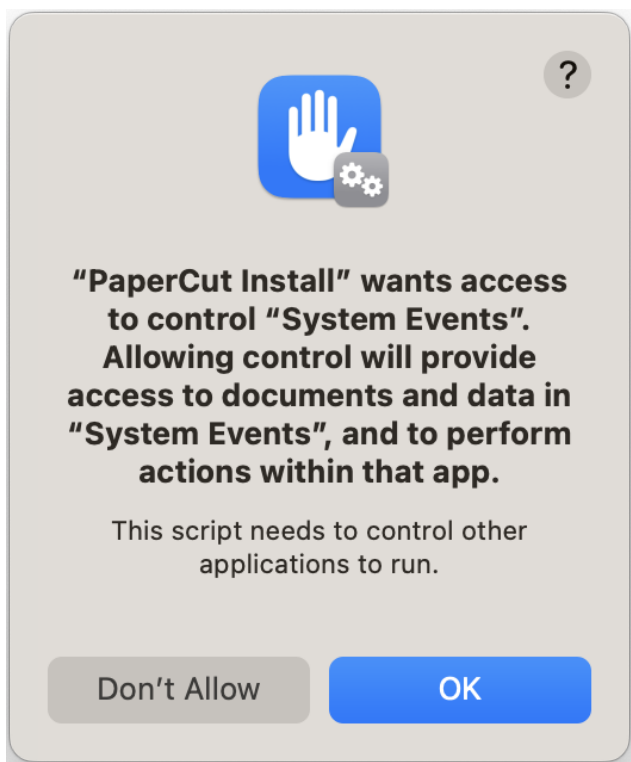


If you have sufficient privileges, you will see this dialog. Enter your computer login password to continue.

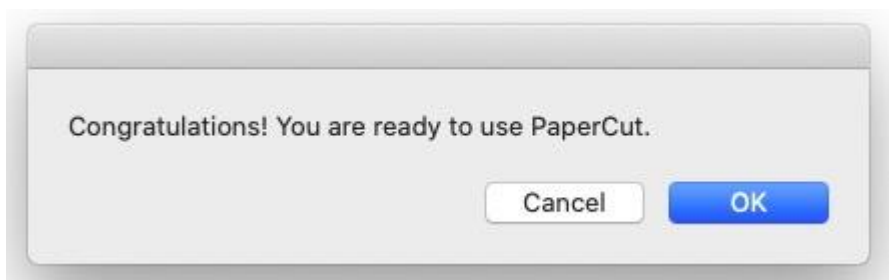


If you do not have sufficient privileges on your computer, another dialog will explain the problem. You need to contact Tech Support for assistance.

You will see another screen like this. Click OK to continue.



When the installation is complete, you will see this dialog. Click OK.



A few seconds later, PaperCut will open automatically. Enter your school ID and password to start using PaperCut.



TROUBLESHOOTING

My PCClient won't open!

Sometimes, PCClient on your Mac computer suddenly becomes unresponsive and refuses to open. (Typically after upgrading macOS on your computer.)

When this happens, you can fix it manually by following these steps:

Download replacement PCClient

<http://tech.canacad.ac.jp/software/printing/PCClient.app.zip>

1. Extract the Zip archive. You get PCClient.app (ver. 19) in a folder.
2. Place this in your Applications folder, replacing your old PCClient.app in the same location.
3. Control-click the application icon and select Open. The first time it won't let you. Click cancel.
4. Control-click the application icon and select Open again. The second time, you will see the Open option.
5. Once opened, it will work normally.

My PCClient logs in automatically to another user. How do I log out?

PCClient login information is saved in a config.properties file in the hidden user Library. To log out of PCClient that is set to log in automatically...

1. Quit PCClient if it is open
2. Delete ~/Library/Preferences/PCClient/config.properties
3. Reopen PCClient